

## INSTALLATION GUIDE

Profix system threaded-holderconsole for concrete panel facade

TYPE: **PK-PFC 2**

**EM** NATIONAL TECHNICAL ASSESSMENT: A-124/2018

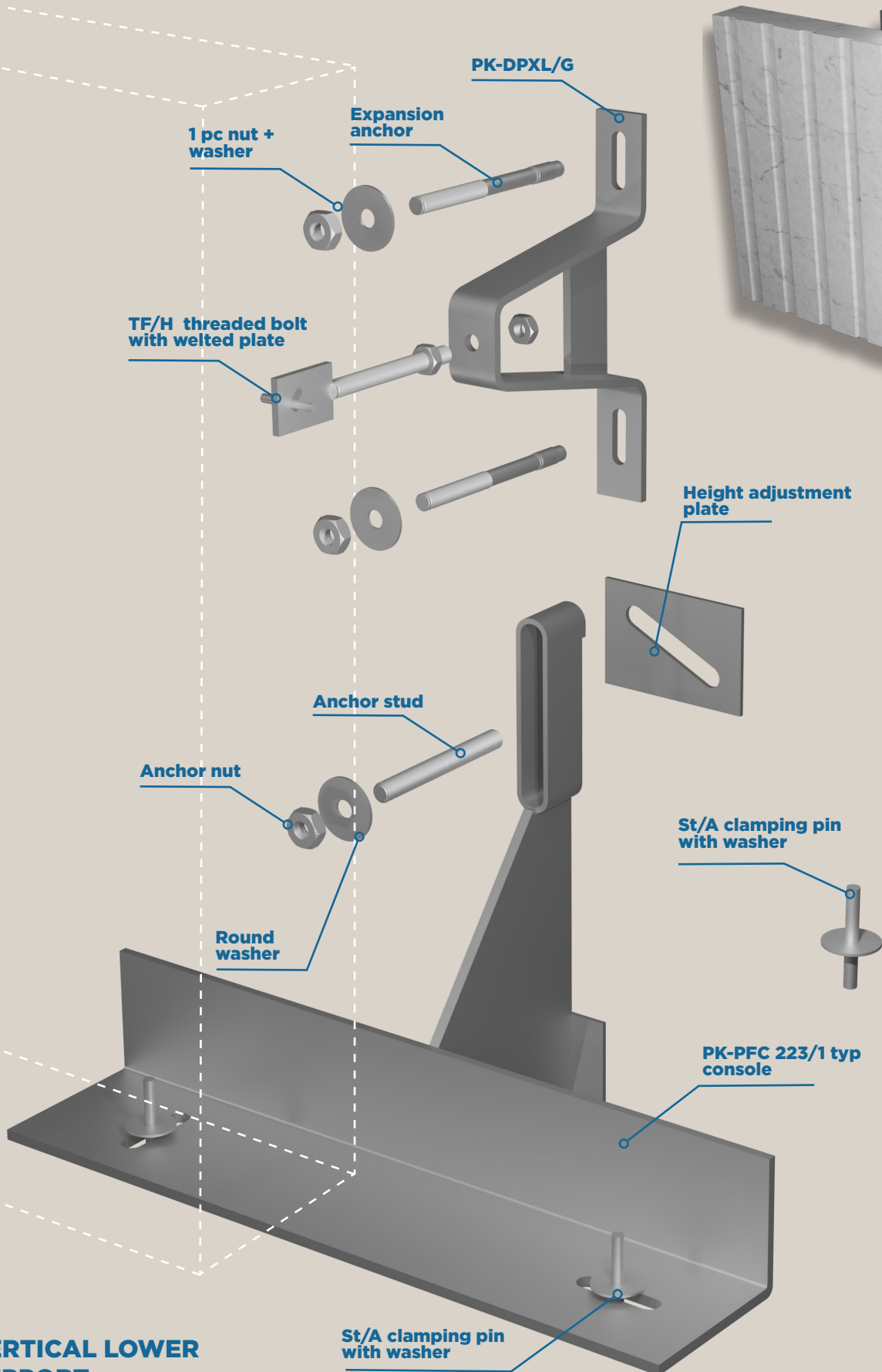


Loading capacity  
Per mounting point:  
3,5 kN/7,0 kN/10,5 kN

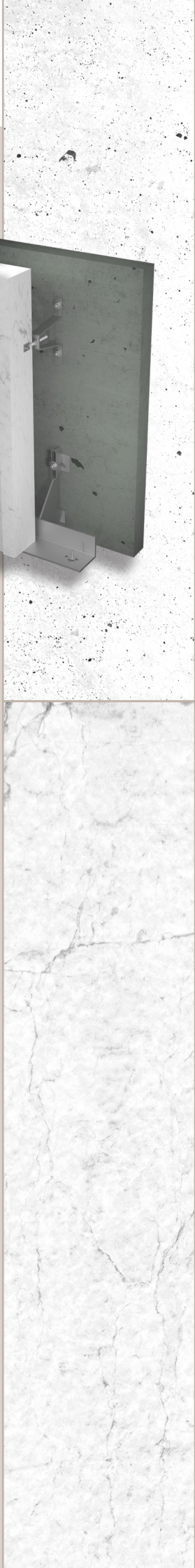
Base material  
Stainless steel:  
308 (1.4301) 316 (1.4571)

Console size  
General protrusion  
160 - 400 mm

**UPPER ANCHORAGE**



**VERTICAL LOWER SUPPORT**



# INSTALLATION GUIDE

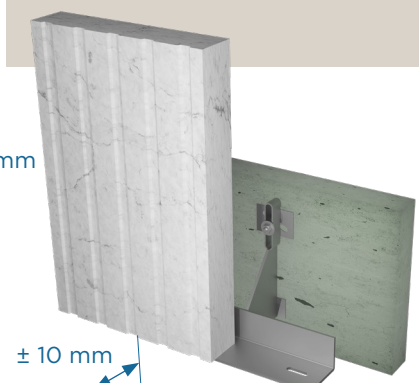
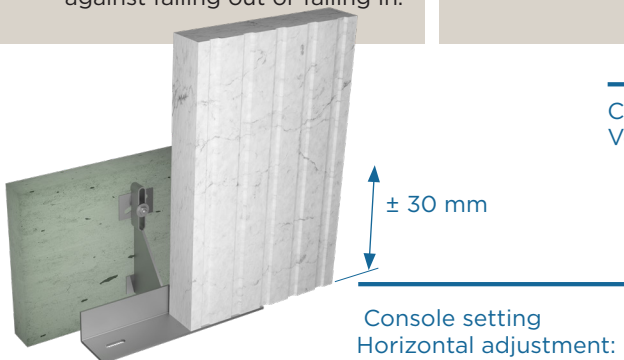
MOUNTING IN VERTICAL GAP



MOUNTING IN HORIZONTAL GAP



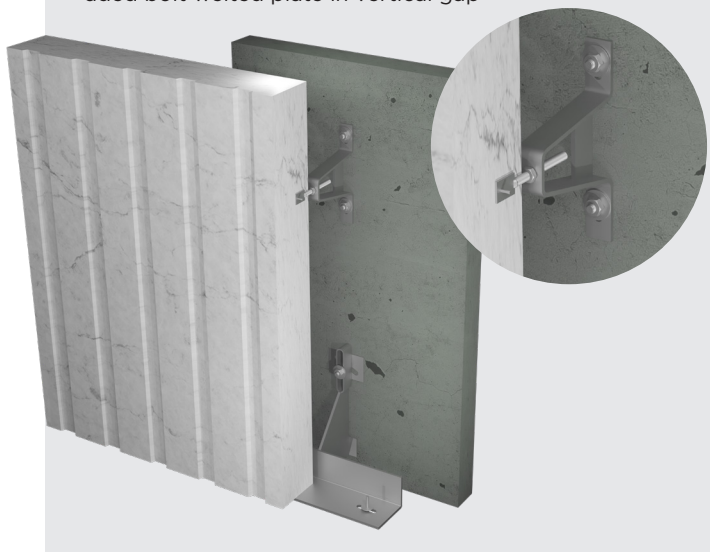
- 01.** Line up the openings and align the concrete panel rows after verifying the building dimensions.
- 02.** Cut an adequate size opening in the insulation material for the console elements; put it aside then reinsert the cut-out piece of the insulation after mounting.
- 03.** After marking, drill the levelled mounting points according to the anchor table, clean them and insert the mounting anchor into the bore-hole with the forced coupling suited to its type. The shortest distances between the edge and the bore-holes should be taken into consideration.
- 04.** Push the rear height adjustment shimming plate with tilted oval bore-hole onto the mounted anchor. Insert the console with the round washer and fix it with a nut. Fasten it with a torque wrench according to the specified value after final adjustment.
- 05.** Set the console holding the masonry roughly in a vertical plane then perform fine adjustment with the rear height adjustment plate by  $\pm 30$ mm. Check whether the corner plate of the console rests on the wall-face properly (at least 25 mm from the edge).
- 06.** The console can be adjusted by  $\pm 10$  mm over its support in a horizontal direction, vertical direction  $\pm 30$  mm.
- 07.** The mounting bore-holes in the concrete panel need to be placed at a distance at least 2.5 times the width of the concrete panel from its corner. Install the clamping pin in the bore-hole with the dilatation sleeve on one side and fill flexible sealing material in the bore-hole on the other side.
- 08.** Assemble the clamp with the threaded head bolt and position it up to the bore-hole of the ventail and the concrete panel width centreline, then slide the clamping pin into the threaded head bolt.
- 09.** Eliminate irregularities on the wall-face by turning the threaded head bolt in and out. Vertical setting is enabled by the oval mounting bore of the mounting clamp. The clamp may deviate from the vertical position (max  $20^\circ$ ).
- 10.** For mounting in a horizontal interstice: the flagstones are loaded onto lower mounting elements, the upper half of the threaded head bolt and the clamping pin. The lower half of the clamping pin holds the concrete panel beneath against falling out or falling in.
- 11.** In a vertical interstice, insert the pin into the bore-holes drilled in the concrete panel side; the entire weight of the concrete panel is loaded on the lower clamp, while the top clamps hold it against falling in or out.
- 12.** Leave minimum 2 mm distance between the threaded head bolt and the bottom concrete panel; keep at least 5 mm distance for the entire course-joint gap for dilatation movements.



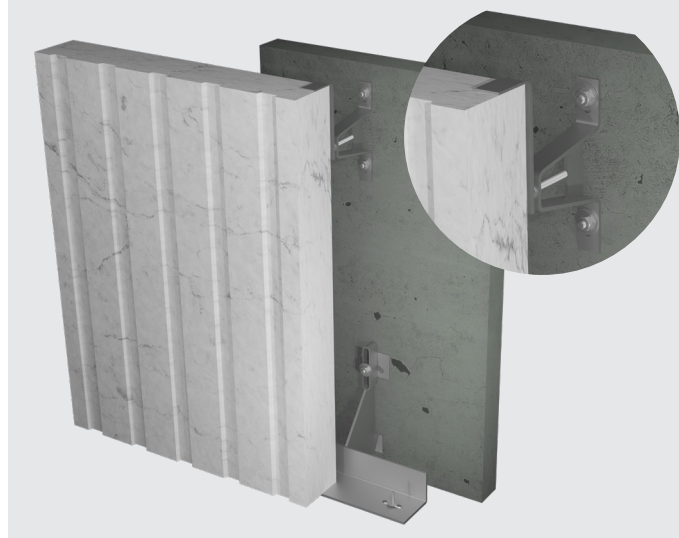
# MAIN APPLICATION SAMPLES

04

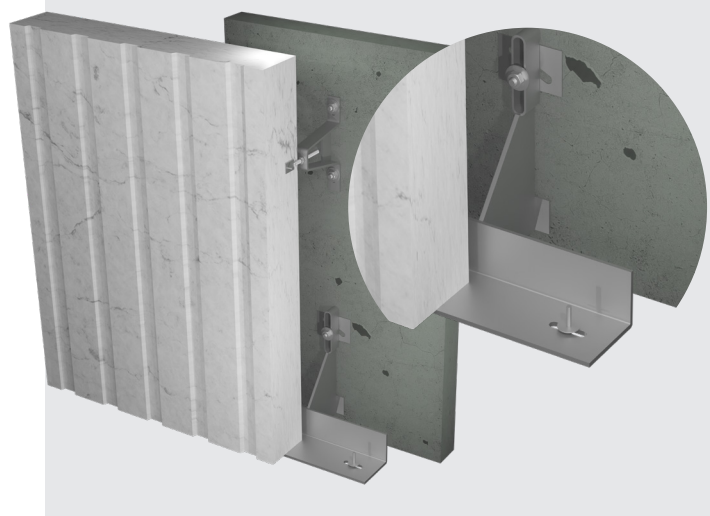
1. Upper anchorage PK-DPXL clamp, with TF/H threaded bolt welded plate in vertical gap



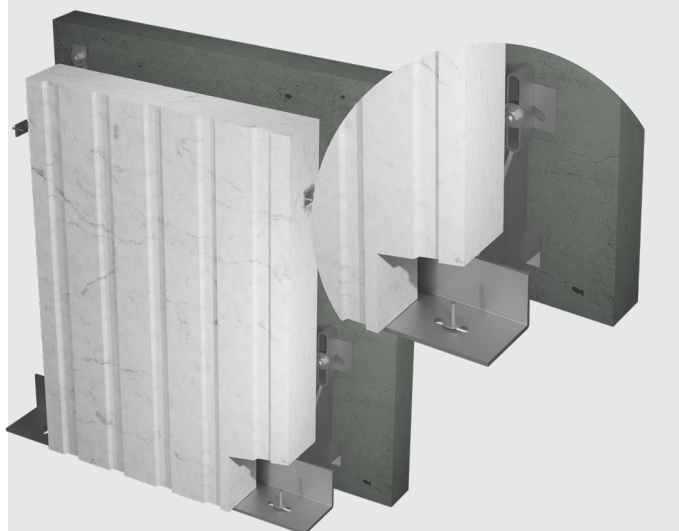
2. Upper anchorage PK-DPXL clamp with TQR/1 hanging support in vertical gap



3. Vertical lower support PK-PFC 223/1 holder-console, at the corners of adjacent concrete panels



4. Vertical lower support PK-PFC 225/2 double holder-console with full support



**FACADE FIXING TECHNOLOGY**

+36 20 377 1361

+36 25 503 730

info@hrprofix.com

H-2400 Dunaújváros, Neumann János utca 7.

[www.hrprofix.com](http://www.hrprofix.com)

[www.hrprofix.hu](http://www.hrprofix.hu)